

HIGH MODULARITY
& EASY MAINTENANCE

TURNKEY SOLUTIONS
FOR CITY WAYFINDING

EXTENSIVE RANGE
DESIGNED TO PERFORM

ELIXIR WAYFINDING TOTEM

Part of an extensive wayfinding
range developed to suit any city





Legible London



Legible Peterborough



Toronto Wayfinding



London Cycle Super Highway

WHY WAYFINDING?

The benefits of wayfinding systems are now widely known and understood.

Many cities throughout the World have introduced a wayfinding system and are enjoying the significant benefits. Future Systems are the leader in wayfinding signage hardware and have supplied many of the World's leading cities.

Wayfinding systems are the key to promoting walking to residents, commuters and visitors by helping them navigate around the city on foot. With user friendly, easy to use detailed maps showing which routes and directional path to take, wayfinding boosts local business and the economy by increasing passing trade and energising locations.

With significant health and environmental benefits, wayfinding encourages walking as an alternative method of transport, reducing congestion, greenhouse gas emissions, air pollution and creates cleaner cities and cleaner air.

Future systems can provide a wide range of contemporary, modern and historic designs to suit your own city.

Key Benefits

- **Accessibility** - Making your city fully accessible to pedestrians, commuters and tourists
- **Promotion** - Quickly identifies routes, destinations and promotes your cities specific places of interest
- **Economy** - Boosts local business and the economy by increasing footfall and trade
- **Health** - Encourages walking and provides health benefits to all
- **Reduced Congestion** - Reduces reliance of other forms of transport and mass transport
- **Environmental** - Reduces road traffic congestion, exhaust emissions and greenhouse gases
- **Air Quality** - Reduces air pollution and provides cleaner air
- **Safety** - Creates safe and welcoming environments by directing people to the right areas
- **Transport Links** - Enhances key routes in and around the city centre, promoting and linking public transport interchanges
- **Designs** - Range of contemporary, modern and historic designs available to suit your city



New York Wayfinding



Legible Leeds



Southampton Wayfinding



Smart Column

Anatomy of an Elixir Totem

Side Panel

Robust 100mm x 12mm totem side plates available in a range of materials and finishes:

Available Options

- Anodized aluminum with silver, black or heritage bronze finish (*standard*)
- Aluminum powder coated in colour of your choice
- Stainless steel with satin polish
- Stainless steel with shot peen finish

Optional extras

- Stainless steel polished lower panel
- Porcelain enamel mapping
- Engraving
- Digital display
- Solar power
- Back lit illumination
- North indicator on base
- ADA compliant



Upper Panel

Low iron tempered glass with ceramic frit and reverse applied digitally printed exterior grade polyester media

Mapping Panel

Low iron tempered glass with ceramic frit and reverse applied digitally printed exterior grade polyester media

Note: We work in partnership with the country's leading cartographers and wayfinding strategists who can develop a mapping system and graphics to suit your cities exact requirements.

Robust Material

Available in a range of robust materials and finishes

Available Options

- Anodized aluminum with silver, black or heritage bronze finish (*standard*) with optional custom logo engraving
- Stainless steel with satin polish or shot peen finish
- Aluminum with powder coated finish in colour of your choice

Base Trim & Foundation

Optional decorative base trim in stainless steel material with satin polish or shot peen finish. A range of shallow foundations are available to ensure totem can be installed in any location

Future Systems Comprehensive Approach

1

Design

The first step to a successful wayfinding system is accurate planning and thoughtful design.

By understanding the environment in which our products are to be installed, the whole program can be developed in a thoughtful way, uniting with the landscape without losing prominence, as a clear source of reliable information.

Future Systems in house designers and engineer's work closely with wayfinding scheme designers, architects and city planners. We have many years of experience in the design of street furniture and wayfinding signage systems.

2

Manufacturing

Future Systems production facility enables the rapid and cost effective manufacture and assembly of all wayfinding signage requirements. Incorporating the very latest manufacturing technology, Future Systems resources are second to none in this sector. This facility enables a seamless flow from concept to prototyping and finished products at sensible costs, whilst maintaining the highest standard of quality and detailing.

3

Graphics Printing

Our dedicated graphics production department has a wealth of experience on high profile projects for quality demanding clients such as Transit Agencies, Airports Authorities, City Planners, architects and designers globally.

Future Systems are able to provide specialist digital printing of mapping and directional information using the very latest print production techniques, whether it be back printed glass, porcelain enamel or screen printing.

4

Installation

We consider a project only ready once it is in the ground and the client is 100% satisfied.

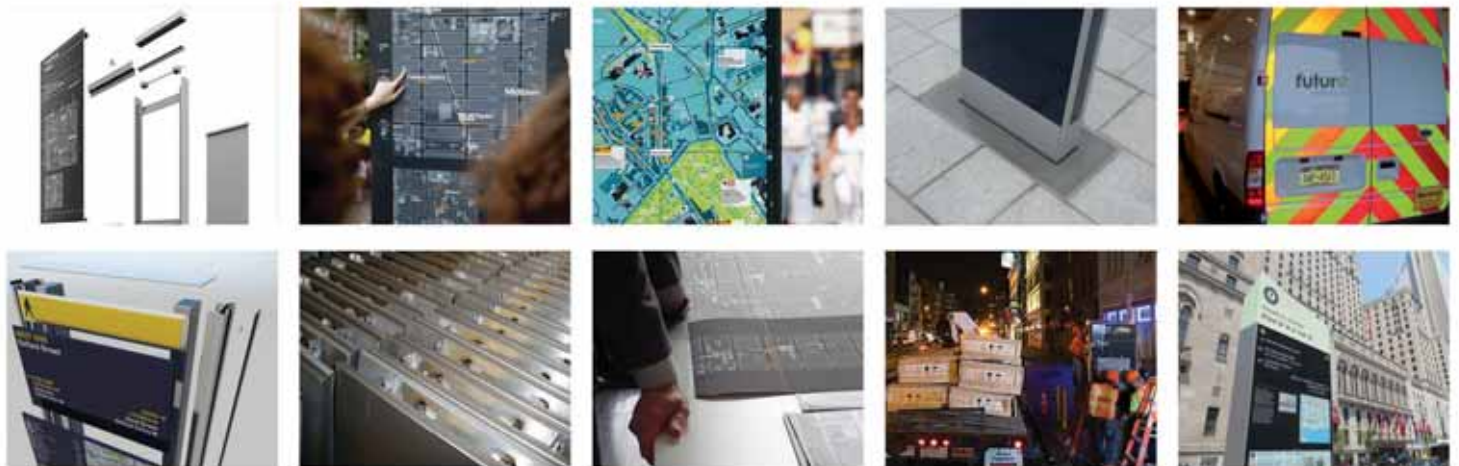
To facilitate this, Future Systems can provide a range of statewide installation services, including full groundworks, foundation, product installation and traffic management. We are also happy to work in collaboration with a groundworks contractor of your choice.

Our shallow foundation designs ensure installation in a wide range of sidewalk materials.

5

Maintenance

We provide a range of cleaning and maintenance services to suit all requirements, including regular updates of mapping panel information and emergency response call out services 24/7.



Future Systems Inc | 230 West Monroe Street | Suite 310 | Chicago | IL 60606

T. 00 +1 845 570 2745 | E. sales@futuresystems-inc.com | W. www.futuresystems-inc.com | [@FutureSystemsTw](https://twitter.com/FutureSystemsTw)



future
systems inc